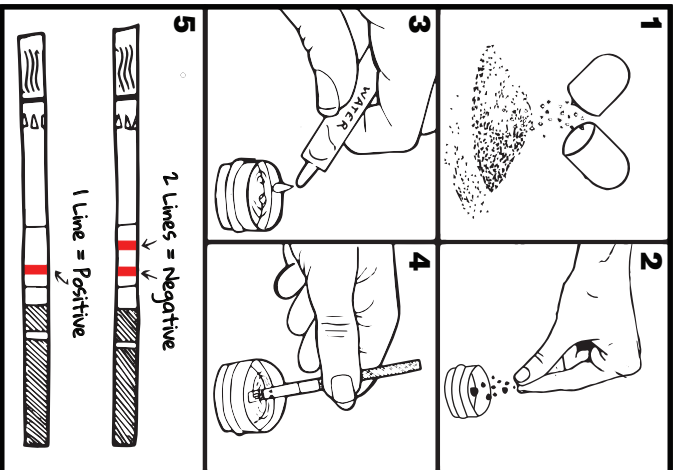


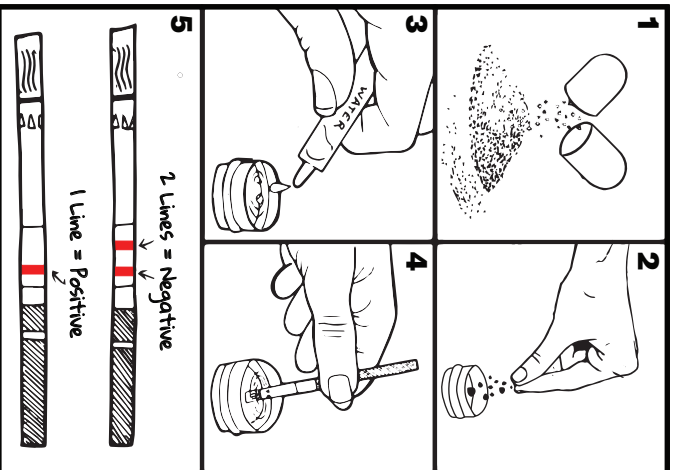
FENTANYL TEST STRIPS GUIDE

1. Test residue in baggie or cooker, or a tiny amount of powder/crushed drug.
2. If testing residue, leave it in baggie or cooker. If testing crushed drug, put a tiny amount into a small container.
3. Add ¼ inch clean water to the container, cooker, or baggie and stir to dissolve the powder.
4. Insert wavy end of the strip into the liquid **no higher than the blue line** and hold there for 15 seconds.
5. Put the strip down on a clean surface, and wait 5 minutes for result.



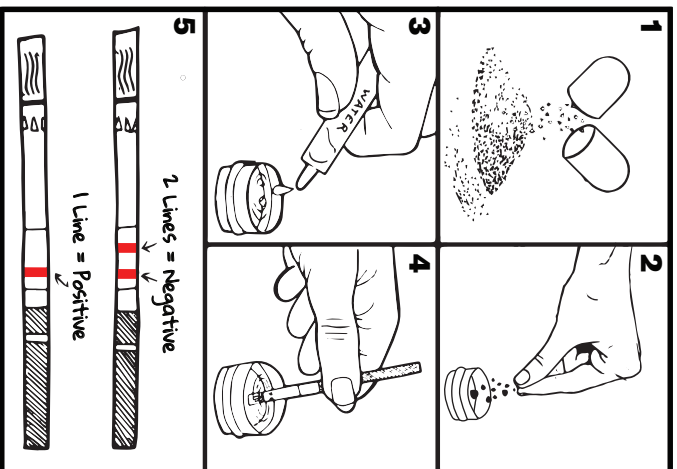
FENTANYL TEST STRIPS GUIDE

1. Test residue in baggie or cooker, or a tiny amount of powder/crushed drug.
2. If testing residue, leave it in baggie or cooker. If testing crushed drug, put a tiny amount into a small container.
3. Add ¼ inch clean water to the container, cooker, or baggie and stir to dissolve the powder.
4. Insert wavy end of the strip into the liquid **no higher than the blue line** and hold there for 15 seconds.
5. Put the strip down on a clean surface, and wait 5 minutes for result.



FENTANYL TEST STRIPS GUIDE

1. Test residue in baggie or cooker, or a tiny amount of powder/crushed drug.
2. If testing residue, leave it in baggie or cooker. If testing crushed drug, put a tiny amount into a small container.
3. Add ¼ inch clean water to the container, cooker, or baggie and stir to dissolve the powder.
4. Insert wavy end of the strip into the liquid **no higher than the blue line** and hold there for 15 seconds.
5. Put the strip down on a clean surface, and wait 5 minutes for result.



FENTANYL TEST STRIPS GUIDE

1. Test residue in baggie or cooker, or a tiny amount of powder/crushed drug.
2. If testing residue, leave it in baggie or cooker. If testing crushed drug, put a tiny amount into a small container.
3. Add ¼ inch clean water to the container, cooker, or baggie and stir to dissolve the powder.
4. Insert wavy end of the strip into the liquid **no higher than the blue line** and hold there for 15 seconds.
5. Put the strip down on a clean surface, and wait 5 minutes for result.

